

(Model:P2)

User Manual

V.3.1

Catalogue

I.Help-----	1
II.Introduction to Sound Console-----	2
III.Sockets & Charge-----	4
IV.Wireless connection-----	4
V.Overview of Multi-device Connectivity-----	5
VI.Using on PC -----	8
VII.Connect to Smartphone/Tablet-----	17

Foreword:

The podcast equipment bundle is designed for live streaming& recording.When connected to the phone or computer, it will become to the external audio input/output device of the phone or computer. You not need to download any drivers or specific applications.You can use it on any audio and video applications/programs. E.g. YouTube, Tiktok, Twitch, OBS, Audacity...

I.Help

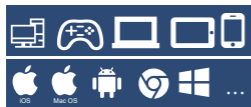
After reading the manual, if you still have confusion, please visit the link to find more help. The content of the page are constantly updated.



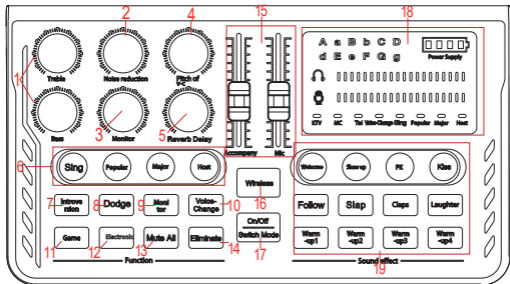
<https://www.haynerseekcaster.com>
<https://www.hayner-seek.us>
<https://www.facebook.com/haynerseek>



support@hayner-seek.club
sales@hayner-seek.club



II.Introduction to Sound Console



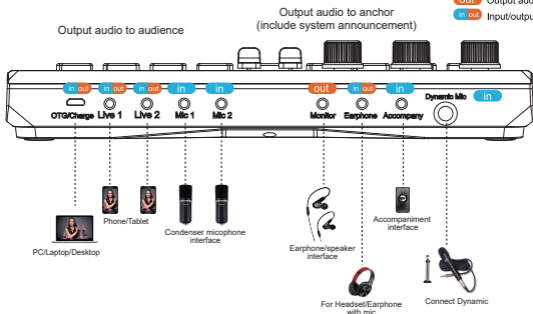
1. **TRE, BASS:** Adjust Treble and Bass.
2. **Noise reduction:** On/Off auto noise reduction function.
3. **Monitor:** Adjust the volume of monitor.
3. **Monitor:** Adjust the volume of monitor.
4. **Pitch of V-C:** Adjust pitch in Voice-Change mode.
5. **Reverb delay:** Adjust reverberation.
6. **Sing/Popular/Major/Host:** 4 kind of sound mode. Flash backlight button: long press "Host " button to turn flash backlight on or off.
7. **Introversion:** On/Off Introversion.
When using the PC for live broadcast, gaming or accompaniment, turn on Introversion button, the audience can only hear your voice, nothing else could be heard. Turn off the button, the audience or teammates can hear all the sounds in your computer.

8. **Dodge:** Accompany music volume will automatically become lower when the host talking. And the accompany music will return to normal when the host no talking.
9. **Monitor:** On/Off Monitor and Earphone.
10. **Voice-Change:** Change your voice to male,female,child and monster.
11. **Game:** When you are playing online game, turn on the "Game", you will not hear your own voice which picked up by your microphone. But your teammates still can hear your voice.
12. **Electronic:** Switch the tone of electronic sound.
13. **Mute All:** When turn on, the sound input from the microphone and headset can not be listened to, and the sound of accompaniment, special effect sound and live room sound is normal.
14. **Eliminate:** To remove the singer's voice in the song.
15. **Accompany,Mic:** Adjust volume of accompaniment, microphone.
16. **Wireless:** On/Off wireless connectivity (Bluetooth). Bluetooth function only can be used for input music to sound card.
17. **On/Off Switch Mode:** Power On/Off(Long press), Switch sound mode(click)
18. **Indicator light area**
19. **Welcome, Show up, Pk, Kiss, Follow, Slap, Clap, Laughter, Warm-up 1, Warm-up 2, Warm-up 3, Warm-up 4 :** Click the button to play the corresponding sound effect.

III.Sockets & Charge

Legend

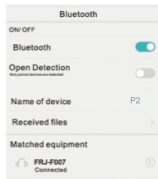
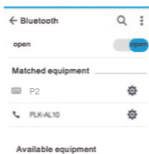
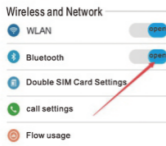
- in** Input audio
- out** Output audio
- in out** Input/output audio



"Monitor" port for earphone/speaker (without mic)
"Earphone" port for earphone(with mic)

IV.Wireless Connection

BT connection only for supplying accompany music. Not for recording!



- 1.Open BT on smartphone/tablet.
- 2.When the BT device "P2" is detected, click "P2" to connect.

3. The wireless function only support to input accompany music.
4. When the sound console has been connected with wireless, other device will can't find the sound console in their BT list. Please disconnect the previous device when you want to connect it to new device via wireless.

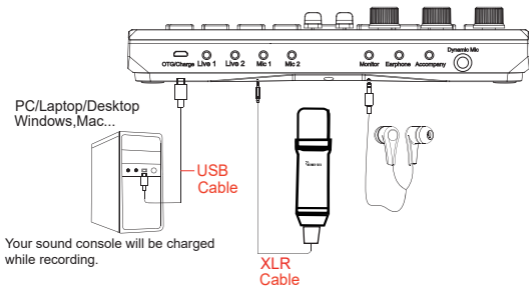
V. Overview of Multi-device Connectivity

Tip:

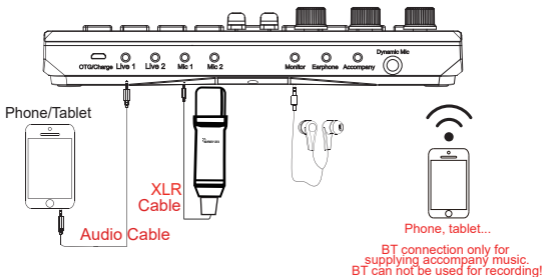
1. The following usage methods apply to live broadcast and recording.
2. If your phone/tablet do not have a 3.5mm audio port, you need an adapter.

1. PC record/live, the same PC supply accompany music

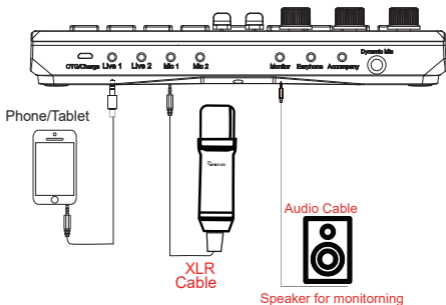
- 1 To live broad cast on a computer/laptop, you need to connect the charging port of the sound console through the USB charging cable.
- 2 The computer will automatically identify and install the sound card driver.



2. Phone record/live, the other phone supply accompany music



3. Phone record/live, speaker monitoring



Tip: If your phone/tablet do not have a 3.5mm audio port, you need an adapter. Please get the adapter from smartphone brand official shop.

To check if the sound card has been identified and installed by the computer.

1.Right-click the loudspeaker on the taskbar of the computer, open “Playback device” . If “MVSILICON B1” is displayed and set as the default, it means the sound card has been recognized by the computer and installed successfully.

2.Right-click the loudspeaker on the taskbar of the computer, open “Recording equipment” . If “MVSILICON B1” is displayed and set as the default, it means the sound card microphone has been recognized by the computer and installed successfully.

Tip:

- a.The console may not work properly or at all if connected to a USB hub. This depends on the functionality of your hub. If this is the case, plug the device directly into the computer.
- b.If the computer does not show the sound console as a default device, you must set the console as default. If you need to exclude other recording or playback devices from a live broadcast on your computer, you must disable all other audio devices, leaving only your sound console.

You can scan the QR code for more help. E.g. download user manual, view guidance video. We also set up a message area, contact after-sales. Please feel free to contact us if you have any questions.



HS-AP201
<http://bitly.ws/k7Yi>



TB-AP203
<https://bit.ly/3tm0Uuv>

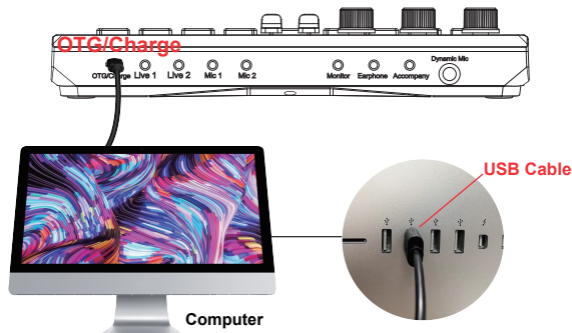
VI. Using on PC

This bundle can be used on desktop computer, laptop... When it is connected to computer. The bundle will be the external audio input&output device of the computer. You don't need to download any drivers or specific programs for it. You can use it with any record or live software on the computer. E.g. OBS, Audacity, YouTube...

Also, you can use it with Sony Playstation, interactive smart whiteboard... You just need to connect the sound console's PC port to the terminal device. The bundle will be the external audio input&output device of the terminal device.



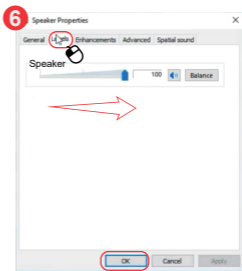
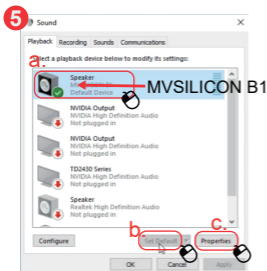
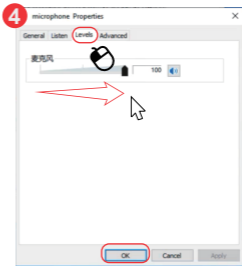
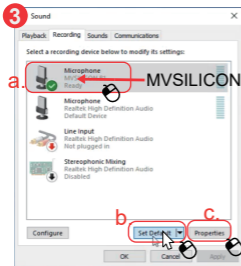
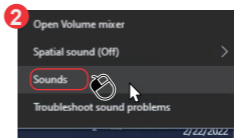
● Connect to PC



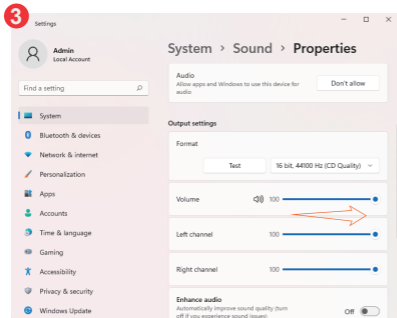
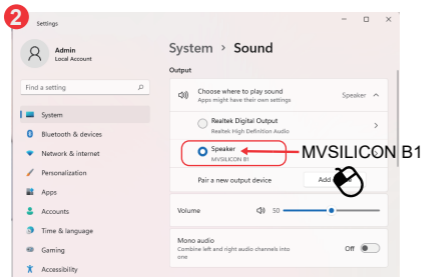
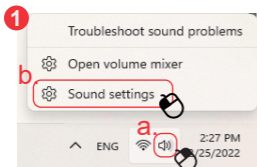
E.g. : iMac/Macbook(Mac OS device)

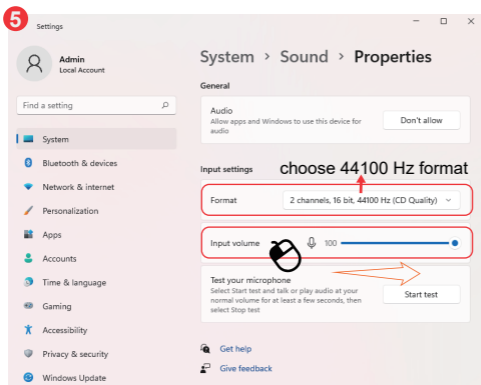
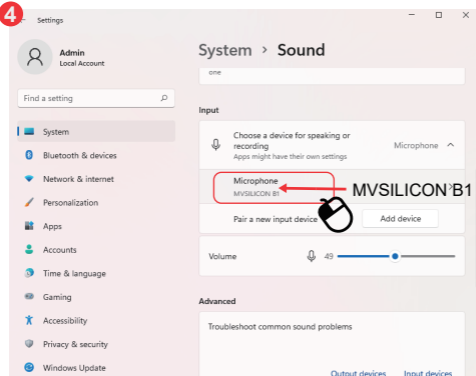
Desktop/Laptop/Chromebook... (Windows, Linux...)

1.Windows 7,8,10



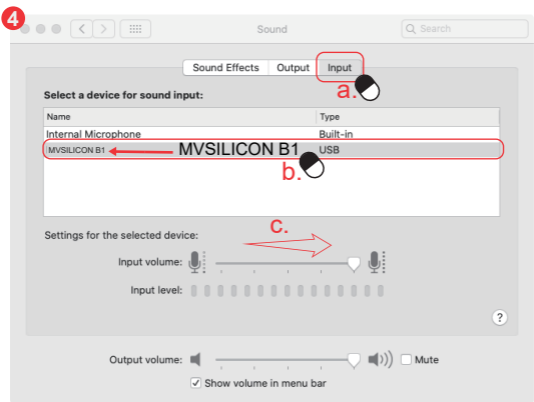
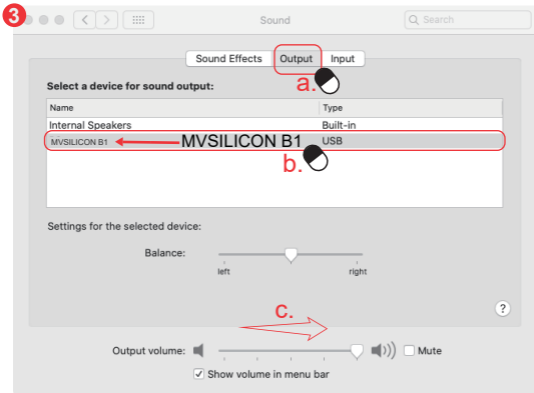
windows 11





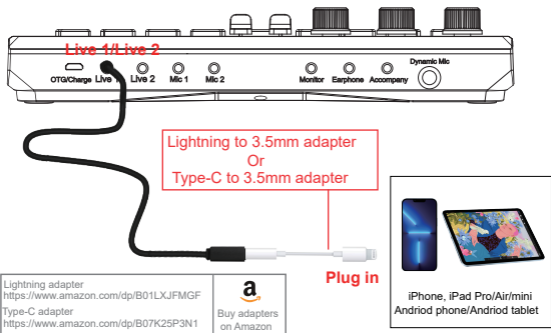
3. Mac OS





VII.Connect to Smartphone/Tablet

1. Phone/tablet without 3.5mm port



2. Phone/tablet with 3.5mm port



When connected, the bundle will become external audio input/output device of Smartphone/Tablet. Don't need to download any drivers and specific applications. Free drive, plug-n-play.

This podcast equipment kit meets the use of most app, you can use it on live apps: TikTok, YouTube,Bigolive and recorder apps, etc...



Technical support:



<https://www.haynerseekcaster.com>

<https://www.hayner-seek.us>

<https://www.facebook.com/haynerseek>



support@hayner-seek.club

sales@hayner-seek.club



MADE IN CHINA